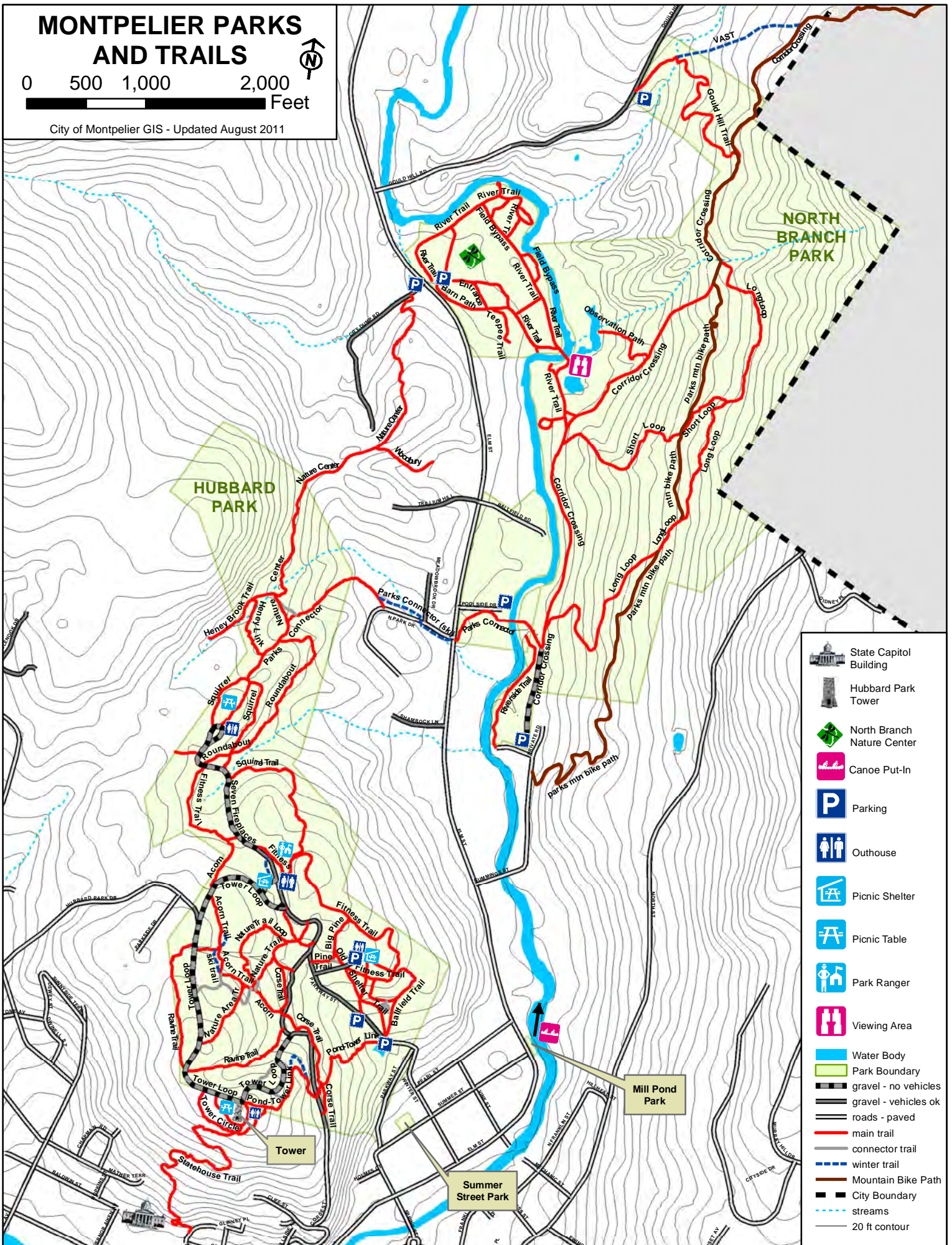


MONTPELIER PARKS AND TRAILS

0 500 1,000 2,000 Feet

City of Montpelier GIS - Updated August 2011



- State Capitol Building
- Hubbard Park Tower
- North Branch Nature Center
- Canoe Put-In
- Parking
- Outhouse
- Picnic Shelter
- Picnic Table
- Park Ranger
- Viewing Area
- Water Body
- Park Boundary
- gravel - no vehicles
- gravel - vehicles ok
- roads - paved
- main trail
- connector trail
- winter trail
- Mountain Bike Path
- City Boundary
- streams
- 20 ft contour