

**PROPOSED AMENDMENTS TO THE MONTPELIER MASTER PLAN,
AS READOPTED WITH MINOR AMENDMENTS JULY 13, 2005**

DATA ADDENDUM

This addendum is proposed to be amended to the 2000 Montpelier Master Plan, as amended and readopted on July 13, 2005. Unless otherwise noted, ***bold, underlined, italic*** text is proposed to added to the existing document.

The footer on the pages of the Master Plan is amended to read:

*2000 Montpelier Master Plan, **readopted July 13, 2005 as amended [adoption date]***

The following tables, charts, and figures are intended to replace or supplement relevant tables, charts, and figures in the 2000 Montpelier Master Plan.

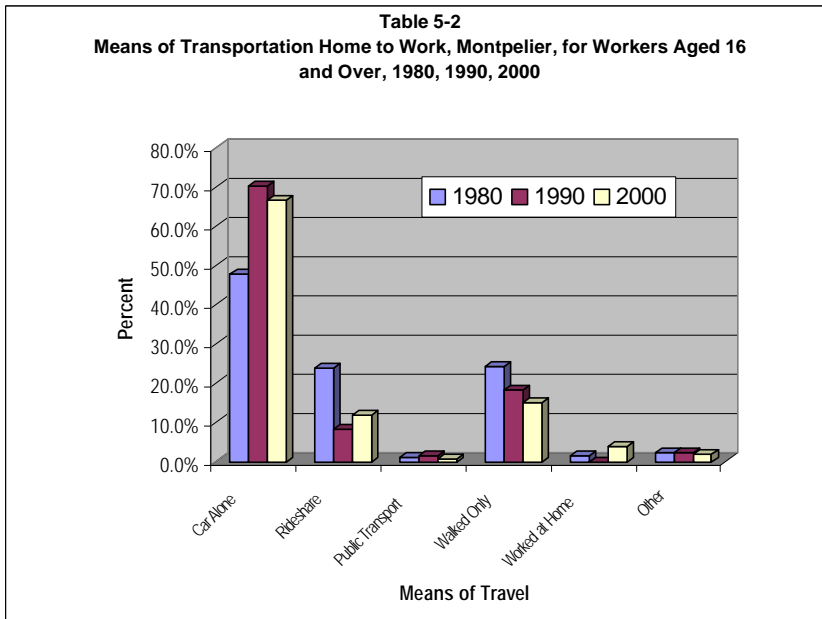


Figure 5-4
Average Traffic Volumes for Montpelier, 1982 - 2001
 Data from the Vermont Agency of Transportation

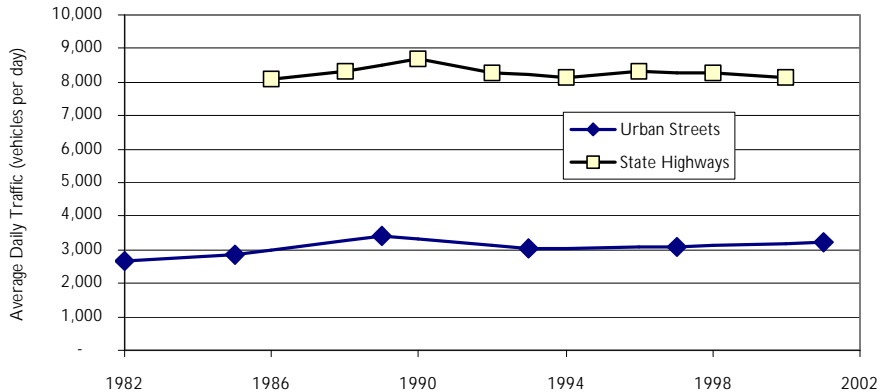


TABLE 6-1
AVERAGE HOUSEHOLD SIZE
 Washington

	<u>Montpelier</u>	<u>County</u>	<u>VT</u>
1970	3.03	3.37	3.37
1980	2.53	2.81	2.87
1990	2.33	2.62	2.67
2000	2.09	2.45	---

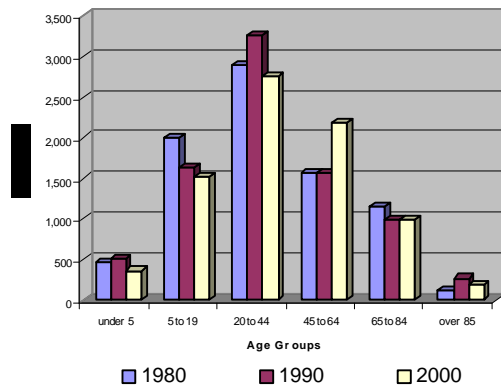
Source: U.S. Census

TABLE 6-6a
Total Housing Units, Montpelier 1980-2000

<u>Year</u>	<u>1980</u>	<u>1990</u>	<u>2000</u>
Total Year-round Units	3,427	3,741	3,863
Percent Renter-Occupied	44%	43%	45%
Percent Vacant	5%	5%	3%

Source: US Census

Table 6-3a
Montpelier Age Groups, 1980-2000



**TABLE 6-7
Public and Publicly-Assisted Housing Units**

Pioneer Apartments	60
Gould Apartments	12
Cumming Street Apartments	20
Lane Shops Apartments	50
Seven St. Paul Street	7
Sect. 8 Existing/Mod. Rehab.	108
Prospect Place	29
Vermont State Housing Authority	16
Franklin Square Condominiums	18
River Station Apartments	36
<u>Wash. Co. Comm. Housing Project</u>	<u>4</u>
Total Units	360

Source: City of Montpelier, 2005

**TABLE 6-8a
2000 Median Home Value**

Montpelier	\$108,000
Washington Co.	\$105,200
Vermont	\$111,200

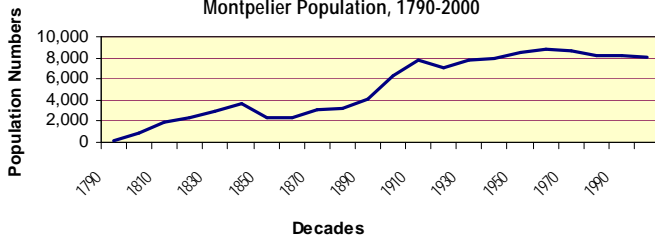
Source: US Census

**TABLE 7-2a
Montpelier Home Heating Fuel
Percentage/Type, 1990 and 2000**

Type of Fuel	1990	2000
Fuel Oil, Kerosene	62.2%	66.3%
Electricity	22.8%	15.0%
Wood	6.7%	3.1%
Utility, Bottled, Tank, LP Gas	6.5%	15.2%
Coal or Coke	1.6%	0.0%
Other	0.2%	0.4%

Source: U.S. Census

**Table 6-9
Montpelier Population, 1790-2000**



**TABLE 7-1
School Enrollment and Utilization**

School	Rated Capacity *	2003/2004 Enrollment	Utilization Rate	2009/2010 Projected Enrollment	Projected Utilization Rate
Union School (K-5)	440	384	87%	335	76%
Main Street (6-8)	371	274	74%	219	59%
High School (9-12)	500	411	82%	344	69%
Total	1,311	1,069	82%	898	68%

Source: Office of the Superintendent, Montpelier Public School System, 2000* and 2004

TABLE 9-6a
Median Adjusted Gross Income
for Families by Town and State, 2000 & 2003

Town	Income		% Chg
	2000	2003	
Barre City	\$23,161	\$23,459	1.3%
Barre Town	\$31,006	\$32,053	3.4%
Berlin	\$28,203	\$30,452	8.0%
E. Montpelier	\$31,602	\$33,953	7.4%
Middlesex	\$37,382	\$37,587	0.5%
Montpelier	\$27,135	\$28,326	4.4%
Waitsfield	\$29,213	\$28,663	-1.9%
Waterbury	\$30,666	\$31,642	3.2%
State Total	\$26,993	\$28,157	4.3%

Source: Vermont Department of Taxes (not adjusted for inflation)

TABLE 9-5
Educational Attainment of Persons Over 25 Years, 1990 & 2000

	Montpelier		Washington County		Vermont	
	1990	2000	1990	2000	1990	2000
No High School Degree	13.9 %	4.9%	18.7 %	11.6 %	19.2 %	13.5 %
High School Graduates	38.8 %	21.6 %	49.7 %	31.5 %	49.3 %	32.4 %
Some College, No Degree		17.7 %		16.6 %		16.9 %
College Degree*	30.5 %	36.0 %	22.5 %	28.0 %	22.6 %	26.0 %
Advanced Degree	16.8 %	19.9 %	9.2%	12.3 %	8.9%	11.1 %

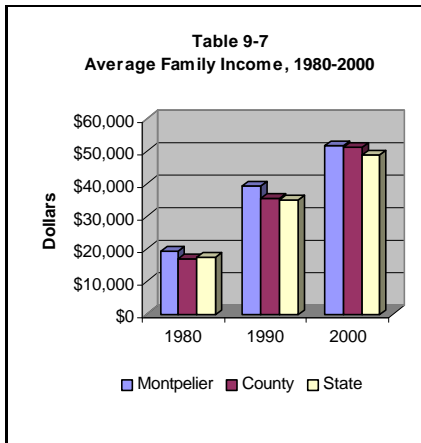
*Includes both Associate and Bachelor Degrees
Source: U.S. Census

**TABLE 9-4
Employment of Montpelier Residents By Occupation, 2000
(% of Total Employed)**

Occupation	Montpelier		Washington County		Vermont	
	1990	2000	1990	2000	1990	2000
Managerial & Professional	41.8 %	49.2 %	30.7 %	39.2 %	27.8 %	36.3 %
Service Occupations		16.4 %		14.8 %		14.6 %
Specialty Technical, Sales	33.1 %		31.7 %		28.8 %	
Sales and Office		24.2 %		26.6 %		24.5 %
Admin. Support Services	12.2 %		13.0 %		13.5 %	
Farm, Forestry, Fisheries	0.2%	0.5%	2.3%	0.6%	4.1%	1.3%
Construction, Extraction, & Maintenance		4.0%		8.5%		9.3%
Precision Production, Craft, Repair	5.7%		11.3 %		12.3 %	
Production, Transportation, & Material Moving		5.7%		10.3 %		14.0 %
Operators, Fabricators, Laborers	7.0%		10.9 %		13.4 %	

Source: U.S. Census

**Table 9-7
Average Family Income, 1980-2000**



**TABLE 10-1
Montpelier Grand List and Assessed Value***

Year	Grand List Value	Assessed Value	% Change
1990	\$3,352,321.97	\$335,232,197	
1995	\$4,077,267.28	\$407,726,728	17.78%
2000	\$4,129,906.58	\$412,990,658	1.27%
2005	\$5,201,270.45	\$520,127,045	20.60%

Source: City of Montpelier Assessor's Office, 2005
*Not adjusted for inflation.

**TABLE 11-2
Area in Current Zoning Districts**

District	Acres	% of Total
LDR	3,191.73	48.4
MDR	2,048.83	31.1
HDR	223.15	3.4
CIV	35.42	0.5
CB-I	39.88	0.6
CB-II	73.59	1.1
OP	275.54	4.2
GB	311.27	4.7
RIV	18.39	0.3
IND	172.00	2.6
Cemetery	21.97	0.3
Recreation	184.15	2.8
Total	6,595.92	100.0

Source: City of Montpelier Geographic Information Systems, 2004