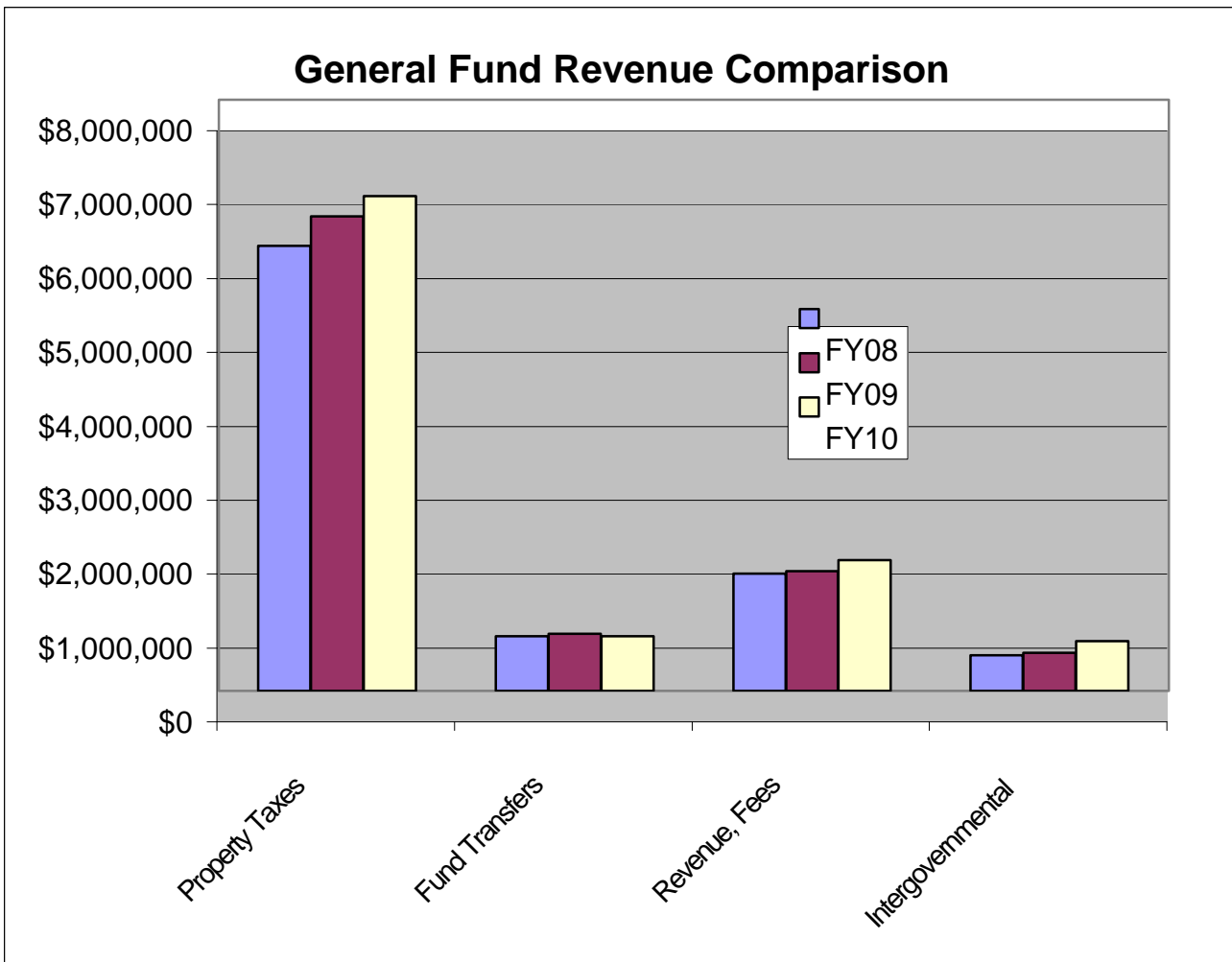


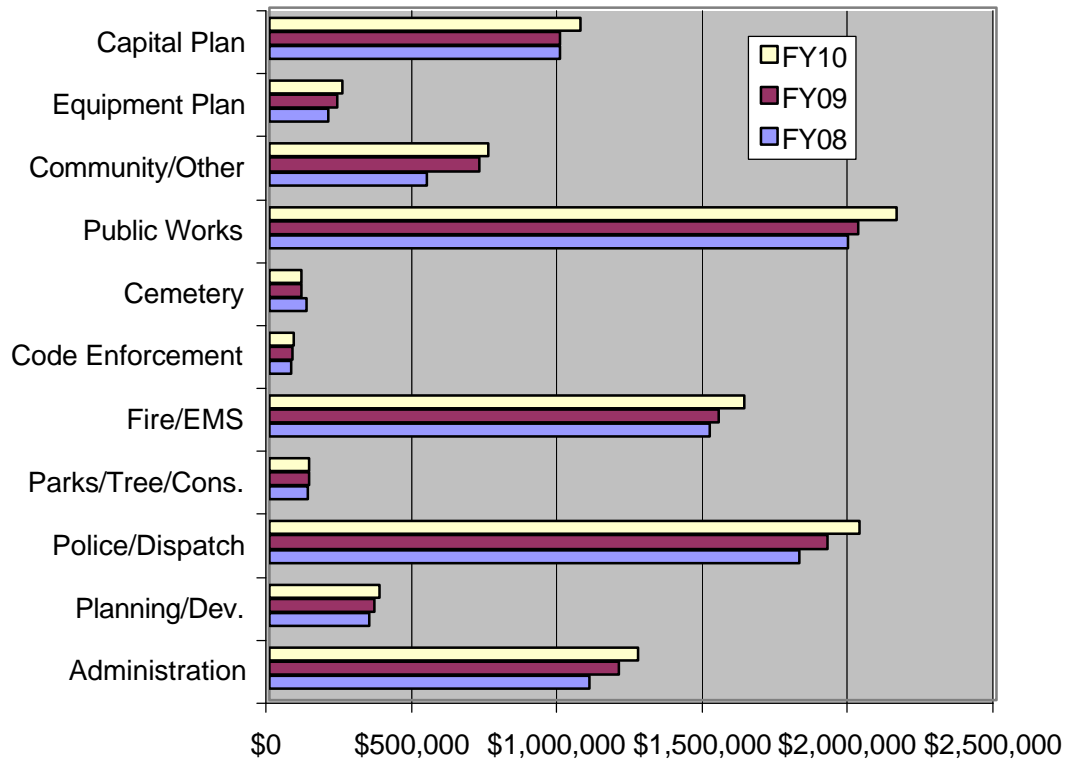
Revenues

CATEGORIES	FY08	FY09	FY10	\$ Change	% Change
Property Taxes	\$6,025,291	\$6,425,267	\$6,692,024	\$266,757	4.2%
Fund Transfers	\$739,362	\$774,763	\$737,699	-\$37,064	-4.8%
Revenue, Fees	\$1,589,793	\$1,623,656	\$1,768,988	\$145,332	9.0%
Intergovernmental	\$485,781	\$512,663	\$669,640	\$156,977	30.6%
Total	\$8,840,227	\$9,336,349	\$9,868,351	\$532,002	5.7%
<i>Grand List</i>	<i>528,665,718</i>	<i>531,606,035</i>	<i>534,264,000</i>	<i>2,657,965</i>	<i>0.5%</i>
Property Tax Rate	\$1.14	\$1.22	\$1.25	\$0.033	2.7%
City General Fund	\$1.12	\$1.16	\$1.25	\$0.089	7.6%
Ballot Items	\$0.02	\$0.05	\$0.00	-\$0.045	-91.0%

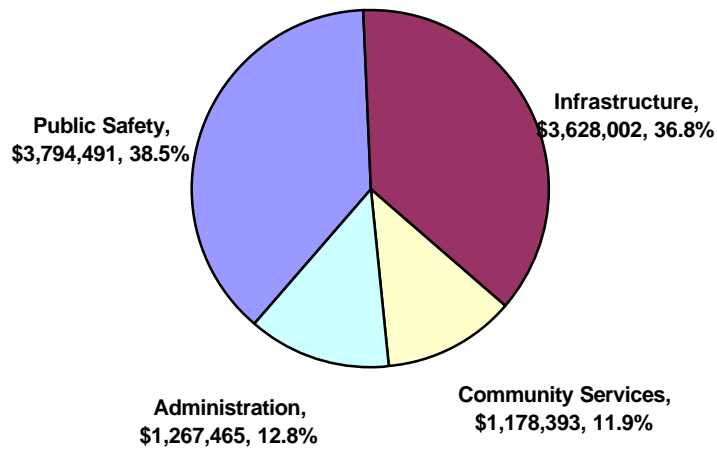


Expenses

General Fund Comparison by Department FY 08, 09, 10

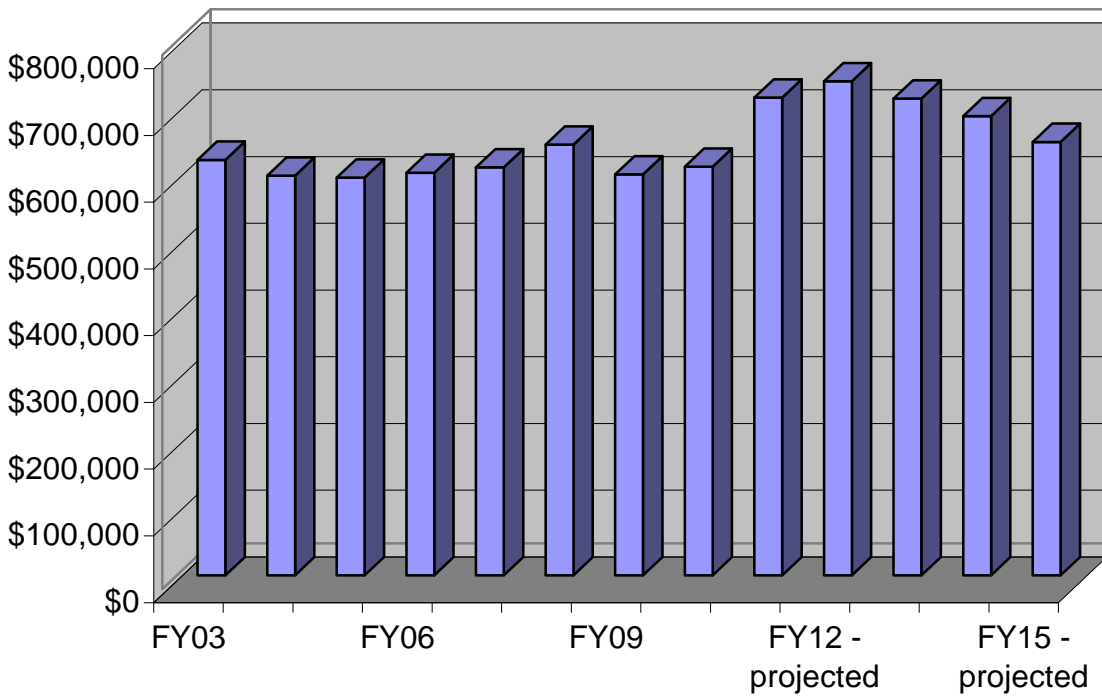


FY10 General Fund Expenses

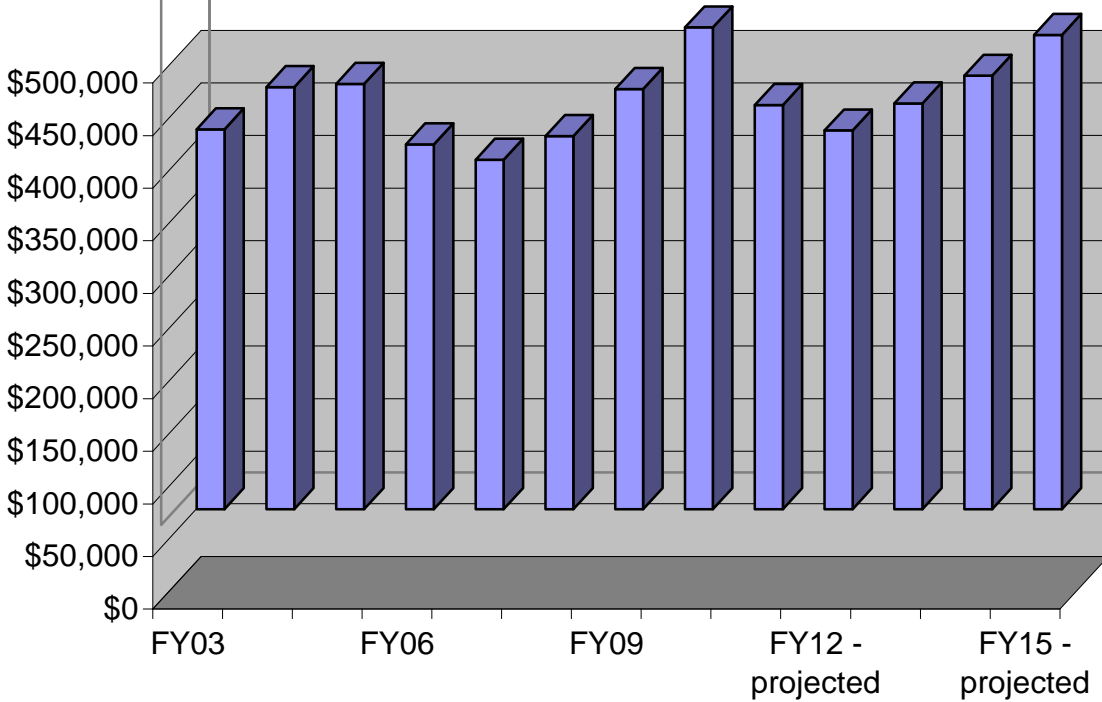


Capital Plan

Scheduled Debt Payments FY03-FY15



Annual Project Funding FY03-FY15



Tax Comparisons

2008 Effective Property Tax Rates

source - 2009 Annual Report - Division of Property Valuation and Review

Vermont Department of Taxes

Municipality	School Residential	School Non-Residential	Municipal	Total Residential
Barre City	\$0.95	\$1.30	\$1.28	\$2.23
Barre Town	\$0.95	\$1.29	\$0.69	\$1.64
Berlin	\$1.20	\$1.26	\$0.41	\$1.61
Calais	\$1.23	\$1.27	\$0.46	\$1.69
East Montpelier	\$1.25	\$1.33	\$0.41	\$1.66
Middlesex	\$1.23	\$1.27	\$0.35	\$1.58
Moretown	\$1.16	\$1.22	\$0.20	\$1.36
Northfield	\$1.24	\$1.32	\$0.63	\$1.87
Plainfield	\$1.09	\$1.32	\$0.65	\$1.74
Waterbury	\$1.11	\$1.25	\$0.30	\$1.41
Worcester	\$1.27	\$1.30	\$0.53	\$1.80

CENTRAL VERMONT AVG.	\$1.15	\$1.28	\$0.54	\$1.69
-----------------------------	---------------	---------------	---------------	---------------

Montpelier	\$1.16	\$1.26	\$0.88	\$2.04
Montpelier vs. Average	\$0.01 0.63%	-\$0.02 -1.91%	\$0.34 63.79%	\$0.35 20.71%

Barre City	\$0.95	\$1.30	\$1.28	\$2.23
Brattleboro	\$1.36	\$1.25	\$0.92	\$2.28
Hartford	\$1.21	\$1.33	\$0.65	\$1.86
Middlebury	\$1.35	\$1.27	\$0.70	\$2.05
Newport	\$1.10	\$1.28	\$0.95	\$2.05
Rockingham	\$1.26	\$1.30	\$0.68	\$1.94
Rutland City	\$1.08	\$1.28	\$1.11	\$2.19
Springfield	\$1.22	\$1.29	\$1.17	\$2.39
St. Albans	\$1.10	\$1.30	\$0.71	\$1.81
St. Johnsbury	\$1.13	\$1.27	\$0.72	\$1.85
Windsor	\$1.20	\$1.29	\$0.98	\$2.18

AVG. OF SIMILAR TOWNS	\$1.18	\$1.29	\$0.90	\$2.08
------------------------------	---------------	---------------	---------------	---------------

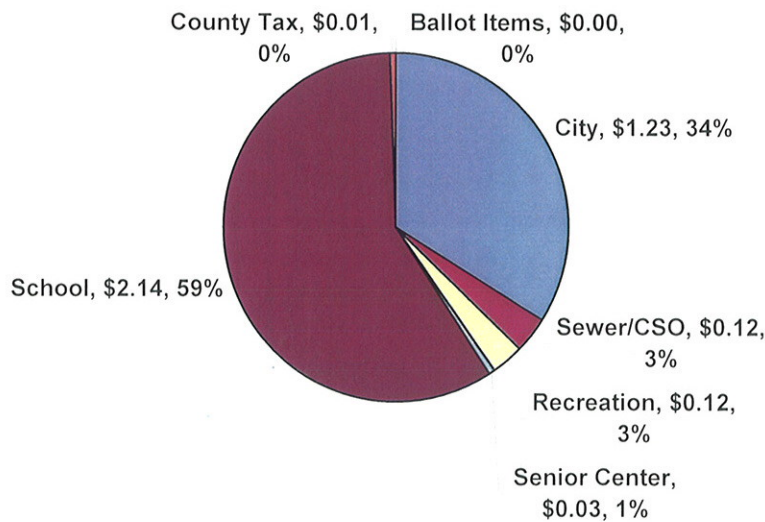
Montpelier	\$1.16	\$1.26	\$0.88	\$2.04
Montpelier vs. Average	-\$0.02 -1.52%	-\$0.03 -2.11%	-\$0.02 -1.76%	-\$0.04 -1.63%

Tax Rates

PROJECTED TAX RATES common level of appraisal = 58.94%

	FY09 Taxes	FY09 Rate	FY10 Taxes	FY10 Rate	Tax \$ Change	Rate Change	Pct. Change
MUNICIPAL							
General Fund	\$6,106,051	\$1.16	\$6,592,392	\$1.23	\$486,341	\$0.074	6.4%
Ballot Items	\$260,543	\$0.05	\$23,600	\$0.00	-\$236,943	-\$0.045	-91.0%
Recreation	\$619,274	\$0.12	\$619,274	\$0.12	\$0	-\$0.001	-0.5%
Senior Citizens	\$87,072	\$0.02	\$135,707	\$0.03	\$48,635	\$0.009	55.1%
TOTAL MUNICIPAL	\$7,072,940	\$1.34	\$7,370,973	\$1.38	\$298,033	\$0.038	2.8%
SCHOOL							
Residential	\$5,216,515	\$1.97	\$5,658,727	\$2.14	\$442,212	\$0.17	8.5%
Non-residential	\$5,183,162	\$2.14	\$5,546,468	\$2.29	\$363,306	\$0.15	7.0%
TOTAL SCHOOL	\$10,399,677		\$11,205,195		\$805,518		7.7%
COUNTY	\$58,673	\$0.01	\$76,032	\$0.01	\$17,359	\$0.003	28.9%
SUB-TOTAL	\$17,531,290	\$3.32	\$18,652,200	\$3.53	\$1,120,910	\$0.21	6.3%
Sewer Benefit	\$106,321	\$0.02	\$106,853	\$0.02	\$532	\$0.00	0.0%
CSO Benefit	\$531,606	\$0.10	\$534,264	\$0.10	\$2,658	\$0.00	0.0%
GRAND TOTAL	\$18,169,217	\$3.44	\$19,293,317	\$3.65	\$1,124,099	\$0.21	6.0%
- non -residential rate		\$3.60		\$3.79		\$0.19	5.2%

FY10 Residential Tax Distribution

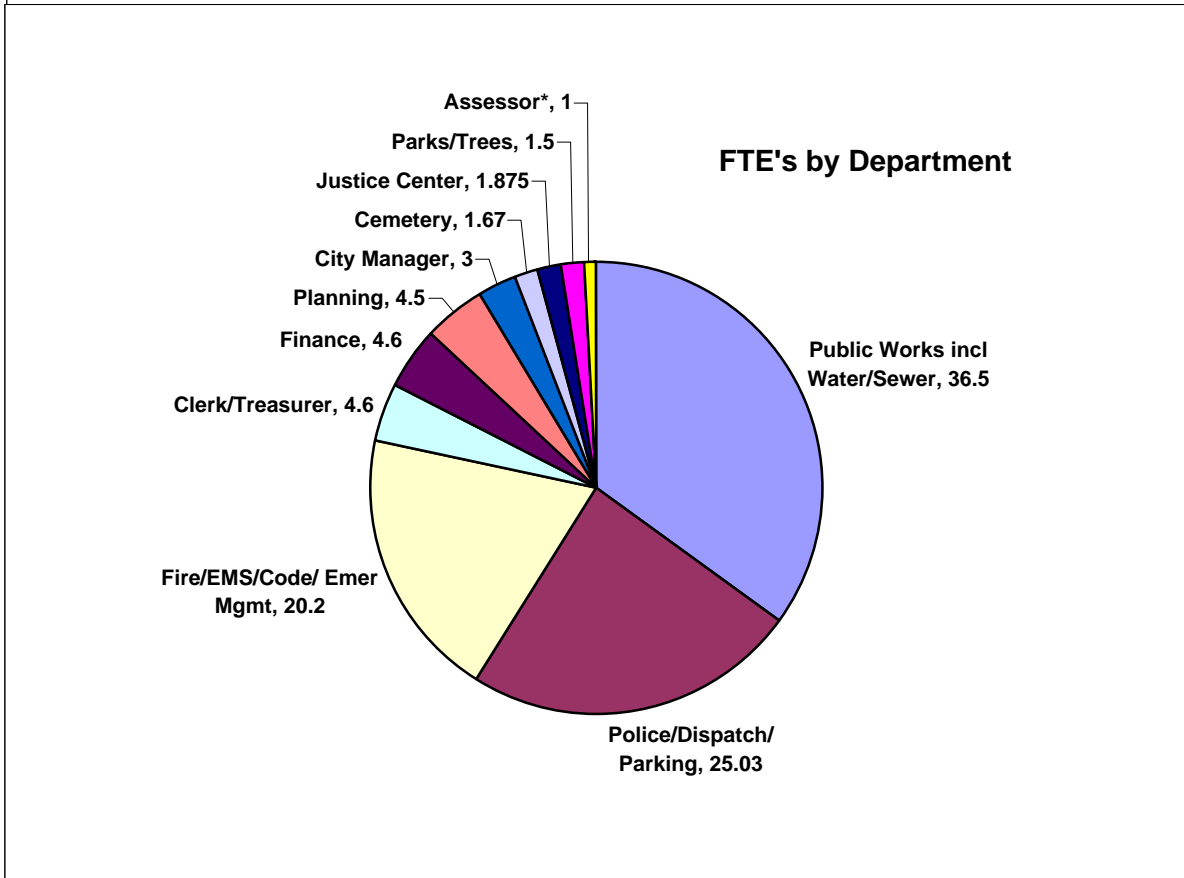
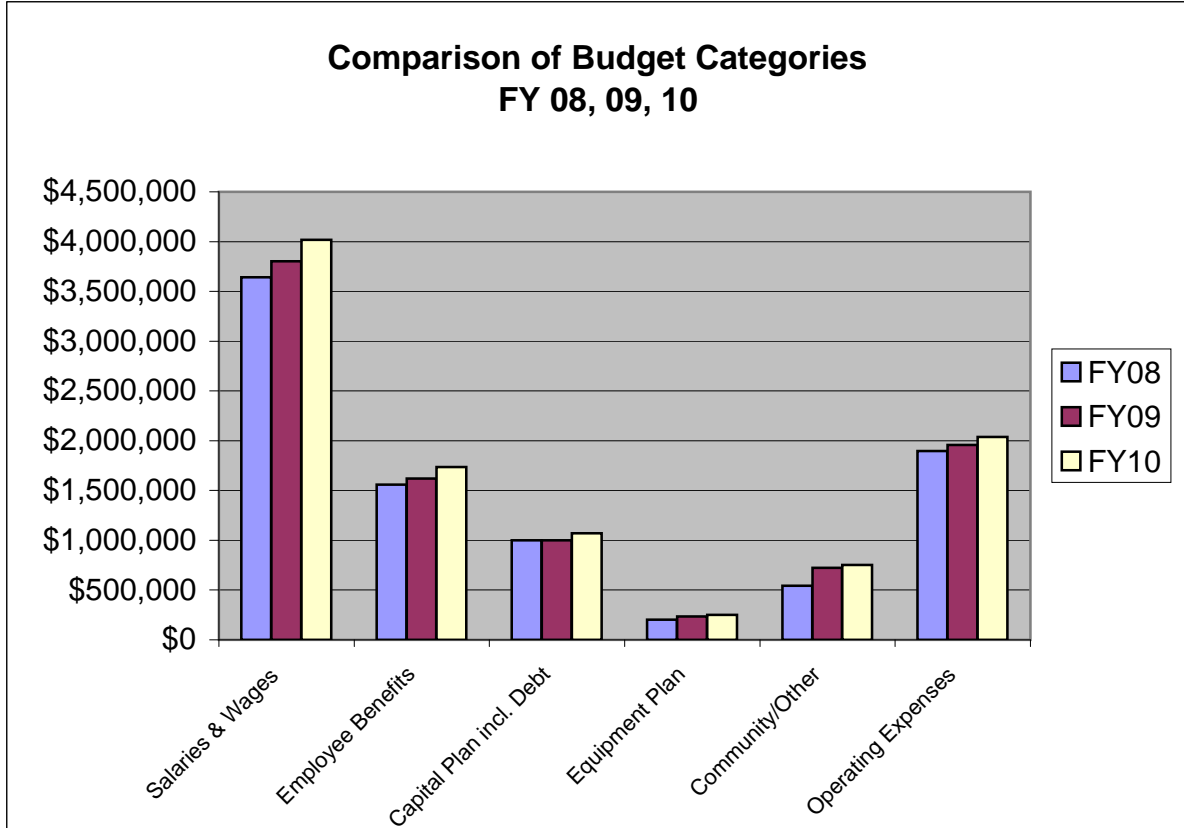


Projections

Five Year Projections

Category	Fy09	Fy10	Fy11	Fy12	Fy13	Fy14	Fy15
EXPENSES	Approved	Proposed	Estimate	Estimate	Estimate	Estimate	Estimate
<i>Percent Change</i>		5.7%	5.0%	5.0%	5.0%	5.0%	5.0%
Salaries & Wages	\$3,802,492	\$4,018,789	\$4,219,728	\$4,430,715	\$4,652,251	\$4,884,863	\$5,129,106
Dollar Change		\$216,297	\$200,939	\$210,986	\$221,536	\$232,613	\$244,243
<i>Percent Change</i>		7.2%	15.0%	15.0%	15.0%	15.0%	15.0%
Employee Benefits	\$1,620,918	\$1,736,862	\$1,997,391	\$2,297,000	\$2,641,550	\$3,037,782	\$3,493,450
Dollar Change		\$115,944	\$260,529	\$299,609	\$344,550	\$396,232	\$455,667
<i>Percent Change</i>		7.0%	2.8%	0.0%	0.0%	0.0%	0.0%
Capital Plan	\$1,000,000	\$1,070,200	\$1,100,000	\$1,100,000	\$1,100,000	\$1,100,000	\$1,100,000
Dollar Change		\$70,200	\$29,800	\$0	\$0	\$0	\$0
<i>Percent Change</i>		7.3%	10.0%	10.0%	10.0%	5.0%	5.0%
Equipment Plan	\$233,735	\$250,847	\$275,932	\$303,525	\$333,877	\$350,571	\$368,100
Dollar Change		\$17,112	\$25,085	\$27,593	\$30,352	\$16,694	\$17,529
<i>Percent Change</i>		4.2%	2.5%	2.5%	2.5%	2.5%	2.5%
Operations	\$1,956,774	\$2,039,051	\$2,090,027	\$2,142,278	\$2,195,835	\$2,250,731	\$2,306,999
Dollar Change		\$82,277	\$50,976	\$52,251	\$53,557	\$54,896	\$56,268
<i>Percent Change</i>		4.2%	2.5%	2.5%	2.5%	2.5%	2.5%
Community/Other	\$722,430	\$752,602	\$771,417	\$790,702	\$810,470	\$830,732	\$851,500
Dollar Change		\$30,172	\$18,815	\$19,285	\$19,768	\$20,262	\$20,768
<i>Percent Change</i>		5.7%	5.9%	5.8%	6.1%	6.1%	6.4%
EXPENSE - total	\$9,336,349	\$9,868,351	\$10,454,496	\$11,064,220	\$11,733,983	\$12,454,679	\$13,249,155
Dollar Change		\$532,002	\$586,145	\$609,724	\$669,763	\$720,697	\$794,476
REVENUES	Fy04	Fy05	Fy06	Fy07	Fy08	Fy09	Fy10
<i>Percent Change</i>		-4.8%	2.5%	2.5%	2.5%	2.5%	2.5%
Fund Transfers	\$774,763	\$737,699	\$756,141	\$775,045	\$794,421	\$814,282	\$834,639
Dollar Change		-\$37,064	\$18,442	\$18,904	\$19,376	\$19,861	\$20,357
<i>Percent Change</i>		9.0%	1.5%	1.5%	1.5%	1.5%	1.5%
Revenue, Fees	\$1,623,656	\$1,768,988	\$1,795,523	\$1,822,456	\$1,849,792	\$1,877,539	\$1,905,702
Dollar Change		\$145,332	\$26,535	\$26,933	\$27,337	\$27,747	\$28,163
<i>Percent Change</i>		30.6%	0.0%	0.0%	0.0%	0.0%	0.0%
Intergovernmental	\$512,663	\$669,640	\$669,640	\$669,640	\$669,640	\$669,640	\$669,640
Dollar Change		\$156,977	\$0	\$0	\$0	\$0	\$0
<i>Percent Change</i>		9.1%	1.4%	1.4%	1.4%	1.4%	1.4%
Non Tax Revenues	\$2,911,082	\$3,176,327	\$3,221,304	\$3,267,141	\$3,313,854	\$3,361,461	\$3,409,981
Dollar Change		\$265,245	\$44,977	\$45,836	\$46,713	\$47,607	\$48,520
<i>Percent Change</i>		4.2%	8.1%	7.8%	8.0%	8.0%	8.2%
Property Taxes	\$6,425,267	\$6,692,024	\$7,233,191	\$7,797,079	\$8,420,129	\$9,093,218	\$9,839,174
Dollar Change		\$266,757	\$541,167	\$563,888	\$623,050	\$673,089	\$745,956
<i>Percent Change</i>		0.5%	0.8%	0.8%	0.8%	0.8%	0.8%
Grand List	531,606,035	534,264,000	538,270,980	542,308,012	546,375,322	550,473,137	554,601,686
Dollar Change		2,657,965	4,006,980	4,037,032	4,067,310	4,097,815	4,128,549
<i>Percent Change</i>		3.6%	7.3%	7.0%	7.2%	7.2%	7.4%
PROPERTY TAX Rate	\$1.21	\$1.25	\$1.34	\$1.44	\$1.54	\$1.65	\$1.77
Dollar Change		\$0.04	\$0.09	\$0.09	\$0.10	\$0.11	\$0.12

Expenditure Categories



All Funds

	FY07	FY08	\$ Change	% Change
General Fund Exp.	\$9,336,349	\$9,868,351	\$532,002	5.7%
General Fund Rev.	\$2,911,082	\$3,176,327	\$265,245	9.1%
<u>Net General Fund</u>	<u>\$6,425,267</u>	<u>\$6,692,024</u>	<u>\$266,757</u>	<u>4.2%</u>
Water Fund Exp	\$2,160,902	\$2,329,953	\$169,051	7.8%
Water Fund Rev,	\$2,160,902	\$2,325,257	\$164,355	7.6%
<u>Net Water Fund</u>	<u>\$0</u>	<u>-\$4,696</u>	<u>-\$4,696</u>	
Sewer Fund Exp.	\$3,532,832	\$3,330,604	-\$202,228	-5.7%
Sewer Fund Rev.	\$3,532,832	\$3,155,106	-\$377,726	-10.7%
<u>Net Sewer Fund</u>	<u>\$0</u>	<u>-\$175,498</u>	<u>-\$175,498</u>	
Parking Fund Exp.	\$563,295	\$583,639	\$20,344	3.6%
Parking Fund Rev.	\$563,295	\$600,776	\$37,481	6.7%
<u>Net Parking Fund</u>	<u>\$0</u>	<u>\$17,137</u>	<u>\$17,137</u>	
TOTAL EXPENSES	\$15,593,378	\$16,112,547	\$519,169	3.3%
TOTAL REVENUE	\$9,168,111	\$9,257,466	\$89,355	1.0%