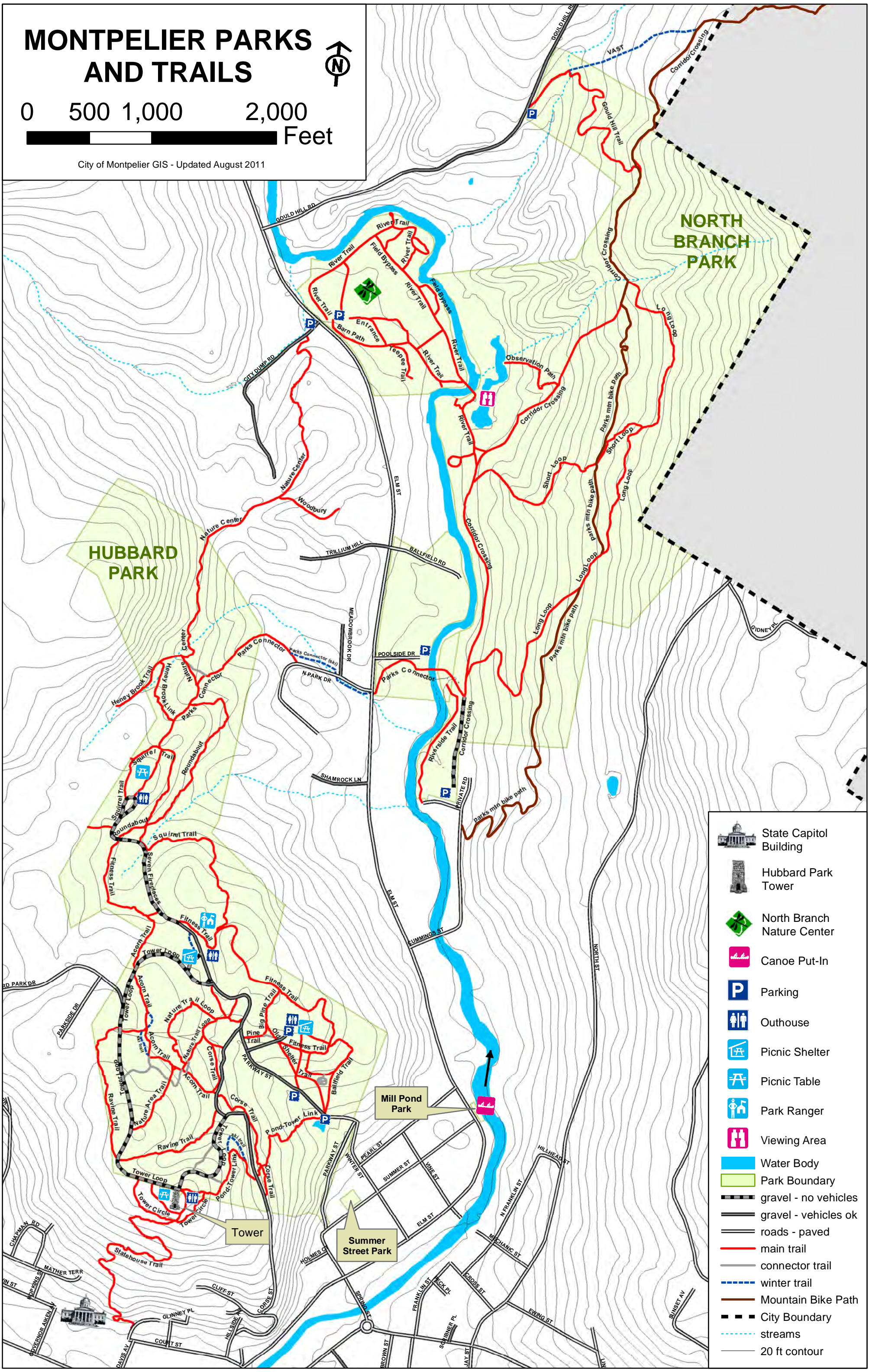


# MONTPELIER PARKS AND TRAILS



0 500 1,000 2,000 Feet

City of Montpelier GIS - Updated August 2011



-  State Capitol Building
-  Hubbard Park Tower
-  North Branch Nature Center
-  Canoe Put-In
-  Parking
-  Outhouse
-  Picnic Shelter
-  Picnic Table
-  Park Ranger
-  Viewing Area
-  Water Body
-  Park Boundary
-  gravel - no vehicles
-  gravel - vehicles ok
-  roads - paved
-  main trail
-  connector trail
-  winter trail
-  Mountain Bike Path
-  City Boundary
-  streams
-  20 ft contour