

Getting you where you need to go!

DUBOIS & KING, INC.

FILE # \_\_\_\_\_

SUBJ \_\_\_\_\_

March 17, 2011

MAR 18 2011

Mr. William J. Fraser, City Manager  
City Hall  
39 Main Street  
Montpelier, VT 05602

REFD TO: \_\_\_\_\_

NOTED: \_\_\_\_\_

Dear Mr. Fraser;

We are pleased to provide input to the design and development of a transit facility in Montpelier. Shown below are the general requirements that we would hope to have incorporated into any new facility. The information below represents general parameters for our space requirements; we look forward to working with you to refine these requirements as the project moves forward and more specific information becomes available about site/building layout and design.

Please coordinate with Aaron Frank, CCTA/GMTA's Assistant General Manager as the project evolves. Aaron can be reached by phone at 802-864-0211 x24 or by email at [afrank@cctaride.org](mailto:afrank@cctaride.org).

We look forward to providing bus service at a new facility in Montpelier one day in the not too distant future.

Best Regards,



Meredith Birkett  
Acting General Manager

Cc: Jeff Tucker, Dubois and King



*Getting you where you need to go!*

## Montpelier Transit Facility

### GMTA General Space Requirements

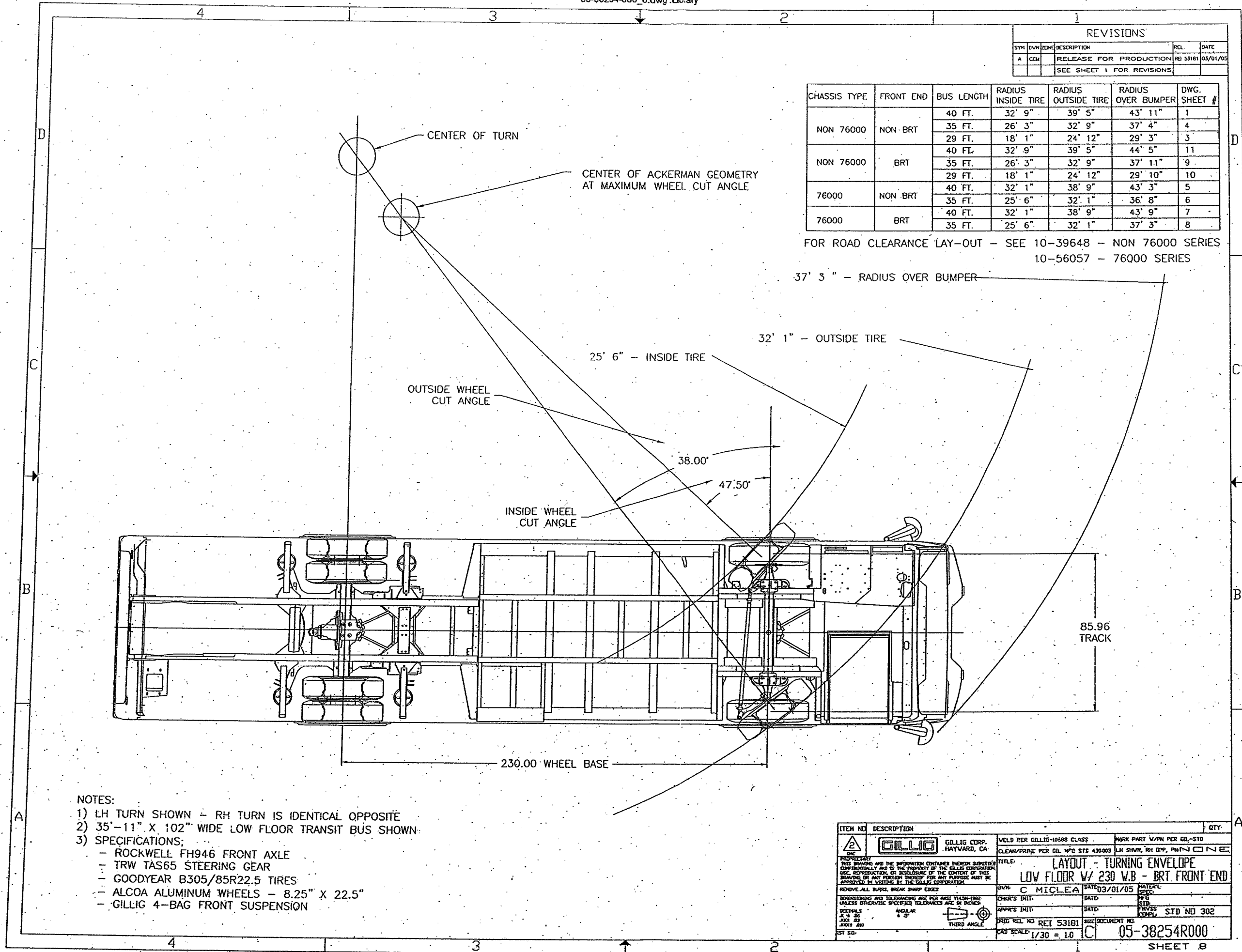
	Square Foot Requirement
<b>Passenger Facilities</b>	
Passenger waiting area	780
Passenger Bathrooms (2)	128
Sub Total	908
<b>Administrative Space</b>	
Indoor Information Kiosk	100
Supervisor's Office	120
Break Room/kitchenette	400
Drivers' bathroom	64
Sub Total	684
<b>Outside Bus Operations Area</b>	
Bus Loading Area - Link bus	729
Bus Loading Area - Local Services	3,003
Covered Connector to inside waiting area	400
Greyhound Bus Boarding Area	729
Sub Total	4,862
<b>Other</b>	
Parking for 5 GMTA staff/visitors	1,000
Short-Term parking for Greyhound Bus	1,000
Sub Total	2,000
Total Interior Space Needed	1,592
Total Exterior Space Needed	6,862



REVISIONS				
SYN	DNV	ZONE	DESCRIPTION	REL. DATE
A	CCM		RELEASE FOR PRODUCTION	RD 53181 03/01/05
			SEE SHEET 1 FOR REVISIONS	

CHASSIS TYPE	FRONT END	BUS LENGTH	RADIUS INSIDE TIRE	RADIUS OUTSIDE TIRE	RADIUS OVER BUMPER	DWG. SHEET #
NON 76000	NON BRT	40 FT.	32' 9"	39' 5"	43' 11"	1
		35 FT.	26' 3"	32' 9"	37' 4"	4
		29 FT.	18' 1"	24' 12"	29' 3"	3
NON 76000	BRT	40 FT.	32' 9"	39' 5"	44' 5"	11
		35 FT.	26' 3"	32' 9"	37' 11"	9
		29 FT.	18' 1"	24' 12"	29' 10"	10
76000	NON BRT	40 FT.	32' 1"	38' 9"	43' 3"	5
		35 FT.	25' 6"	32' 1"	36' 8"	6
76000	BRT	40 FT.	32' 1"	38' 9"	43' 9"	7
		35 FT.	25' 6"	32' 1"	37' 3"	8

FOR ROAD CLEARANCE LAY-OUT - SEE 10-39648 - NON 76000 SERIES  
10-56057 - 76000 SERIES



- NOTES:
- 1) LH TURN SHOWN - RH TURN IS IDENTICAL OPPOSITE
  - 2) 35'-11" X 102" WIDE LOW FLOOR TRANSIT BUS SHOWN.
  - 3) SPECIFICATIONS:
    - ROCKWELL FH946 FRONT AXLE
    - TRW TAS65 STEERING GEAR
    - GOODYEAR B305/85R22.5 TIRES
    - ALCOA ALUMINUM WHEELS - 8.25" X 22.5"
    - GILLIG 4-BAG FRONT SUSPENSION

ITEM NO	DESCRIPTION	QTY.
1	GILLIG GILLIG CORP. HAYWARD, CA	
WELD PER GILLIG-10588 CLASS		MARK PART W/PN PER GL-STD
CLEAN/PRIPE PER GIL WFG STD 430003		LH SHWN, RH OPP. P/N NONE
PROPRIETARY THIS DRAWING AND THE INFORMATION CONTAINED THEREIN SUBMITTED CONFIDENTIALLY AND IS THE PROPERTY OF THE GILLIG CORPORATION. UNLESS REPRODUCTION OR DISCLOSURE OF THE CONTENT OF THIS DRAWING OR ANY PORTION THEREOF FOR ANY PURPOSE MUST BE APPROVED BY GILLIG CORP.		
REMOVE ALL BURRS, BREAK SHARP EDGES		
DIMENSIONS AND TOLERANCES ARE PER ASME Y14.5-1994 UNLESS OTHERWISE SPECIFIED TOLERANCES ARE IN DICES		
REVISIONS	ANGULAR	THIRD ANGLE
DATE	DATE	DATE
APP'R'S INIT.	DATE	DATE
DRG REL NO	REV	DOC
1	REI 53181	
1/30 = 1.0		
		STD NO 302
		05-38254R000
		SHEET 8